

PR

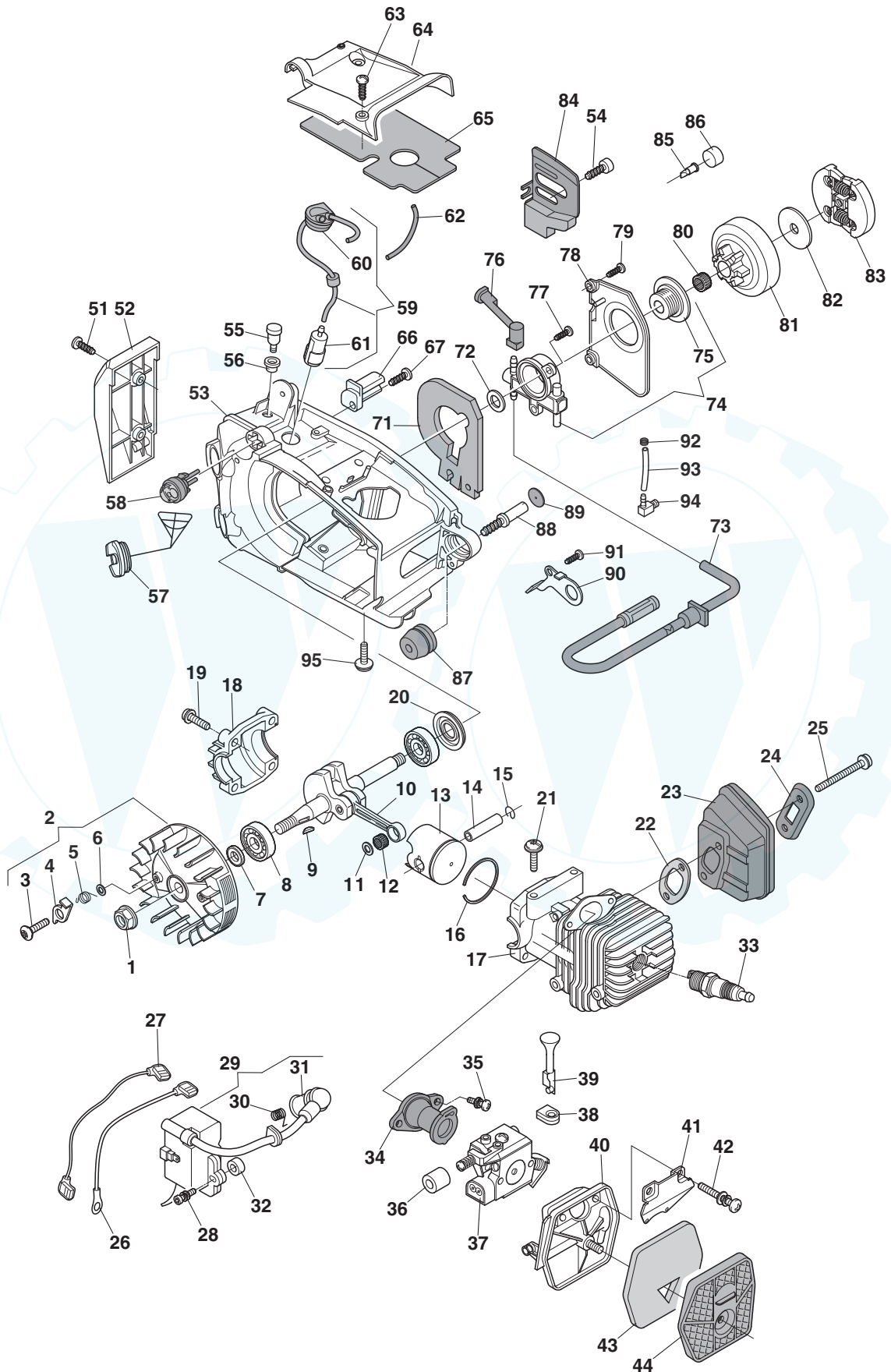
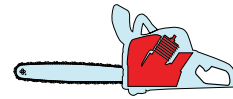
2008

221.0

1 / 3

270

270C



POS.	CODE	Q.TY	DESCRIZIONE	DESCRIPTION	DESCRIPTION	BESCHREIBUNG	REMARKS
1	6995173	1	DADO	NUT	ECROU	MUTTER	
2	6995207	1	ASS. VOLANO MAGNETE	FLYWHEEL ASSY	VOLANT AIMANT	SCHWUNGRAD MAGNET	
3	6995224	2	VITE	SCREW	VIS	SCHRAUBE	
4	6995208	2	AGGANCIO VOLANO	FLYWHEEL STARTER HOOK	FIXATION VOLANT	SPERRE SCHWUNGRAD	
5	6995250	2	MOLLA AGGANCIO	FLYWHEEL SPRING	RESSORT FIXATION	FEDER SPERRUNG	
6	6995225	2	RONDELLA	WASHER	RONDELLE	UNTERLEGSCHIEBE	
7	6995247	1	ANELLO DI TENUTA	SEAL RING	ANNEAU DE TENUE	DICHTRING	
8	6995170	2	CUSCINETTO	BALL BEARING	ROULEMENT	LAGER	
9	6995018	1	LINGUETTA VOLANO	FLYWHEEL KEY	LANGUETTE VOLANT	LASCHE SCHWUNGRAD	
10	6995202	1	ALBERO MOTORE	CRANKSHAFT	ARBRE MOTEUR	MOTORWELLE	
11	6995169	2	RONDELLA	WASHER	RONDELLE	UNTERLEGSCHIEBE	
12	6995237	1	ASTUCCIO A RULLI	NEEDLE BEARING	ROUL. AIGUILLES	WALZENROHR	
13	6995200	1	PISTONE	PISTON	PISTON	KOLBEN	
14	6995172	1	SPINOTTO PISTONE	PISTON PIN	POINTEAU PISTON	KOLBENBOLZEN	
15	6995171	2	FERMO SPINOTTO	CIRCLIP	CIRCLIP POINTEAU	BOLZENSPERRE	
16	6995201	1	FASCIA ELASTICA	PISTON RING	COLLIER ÉLASTIQUE	KOLBENRING	
17	6995245	1	ASS. CILINDRO	CYLINDER ASSY	ENS.CYLINDRE	SET ZYLINDER	
18	6995186	1	COPPA SOTTOCILINDRO	STABILIZER	STABILISATEUR	STABILISATOR	
19	6995252	4	VITE	SCREW	VIS	SCHRAUBE	
20	6995248	1	ANELLO DI TENUTA	SEAL RING	ANNEAU DE TENUE	DICHTRING	
21	6995229	4	VITE	SCREW	VIS	SCHRAUBE	
22	6995185	1	GUARNIZIONE SILENZIA-TORE	MUFFLER GASKET	GARNITURE SILENCIEUX	DICHTUNG SCHALLDÄM-PFER	
23	6995246	1	SILENZIATORE	MUFFLER	SILENCIEUX	SCHALLDÄMPFER	
24	6995251	1	PIASTRINA	PLATE	PLAQUE	HALTEBLECH	
25	6995182	2	VITE	SCREW	VIS	SCHRAUBE	
26	6995210	1	CAVO MASSA	EARTH CABLE	CÂBLE MASSE	ERDUNGSKABEL	
27	6995227	1	CAVO DI STOP	STOP WIRE	CÂBLE ARRÊT	KABELSPERRE	
28	6995234	2	VITE	SCREW	VIS	SCHRAUBE	
29	6995209	1	BOBINA ELETTRONICA	ELECTRONIC COIL	BOBINE ÉLECTRONIQUE	ELEKTRONIKSPULE	
30	6995022	1	MOLLA ATTACCO CAN-DELA	SPARK PLUG SPRING	RESSORT FIXATION BOUGIE	FEDER ZÜNDKERZENBEF.	
31	6995066	1	CAPPUCCIO CANDELA	SPARK PLUG COVER	CAPUCHON BOUGIE	ZÜNDKERZENKAPPE	
32	6995238	2	DISTANZIALE	BUSHING	ENTRETOISE	DISTANZSTÜCK	
33	3210024	1	CANDELA	SPARK PLUG	BOUGIE	ZÜNDKERZE	
34	6995183	1	ASS. COLLETTORE ASI-RAZIONE	INTAKE MANIFOLD ASSY	COLLECTEUR ASPIRA-TION	KOLLEKTOR ANSAUGUNG	
35	6995167	2	VITE	SCREW	VIS	SCHRAUBE	
36	6995212	1	GUARNIZIONE	GASKET	GARNITURE	DICHTUNG	
37	6995244	1	CARBURATORE	CARBURETTOR	CARBURATEUR	VERGASER	
38	6995214	1	GOMMINO LEVA ARIA	GROMMET	CAOUTCHOUC LEVIER AIR	GUMMI CHOCKERHEBEL	
39	6995213	1	TIRANTE LEVA ARIA	CHOKE LEVER ROD	TIRANT MANETTE AIR	SPANNSTIFT CHOKERHE-BEL	
40	6995243	1	BASE FILTRO ARIA	AIR FILTER SUPPORT	BASE POUR FILTRE À HUILE	BASIS F. LUFTFILTER	
41	6995211	1	PIASTRINA	PLATE	PLAQUE	PLATTE	
-	6995168	2	VITE	SCREW	VIS	SCHRAUBE	
43	6995217	1	FILTRO ARIA	AIR FILTER	FILTRE À AIR	LUFTFILTER	
44	6995216	1	COPERCHIO FILTRO ARIA	AIR CLEANER COVER	COUVERCLE FILTRE AIR	LUFTFILTERDECKEL	
51	23878008/0	2	VITE	SCREW	VIS	SCHRAUBE	
52	6995175	1	CARTER ANTERIORE	FRONT COVER	COUVERCLE AVANT	DECKEL	

POS.	CODE	Q.TY	DESCRIZIONE	DESCRIPTION	DESCRIPTION	BESCHREIBUNG	REMARKS
53	6995239	1	ASS.CARTER MOTORE	CRANKASE ASS.Y	ENS. CARTER MOTEUR	PAAR MOTORABDECKUNG	
54	6995187	2	VITE	SCREW	VIS	SCHRAUBE	
55	6995221	1	ASS. VALVOLA SFIATO	BREATHER VALVE ASSY	VANNE ÉVENT RÉSERVOIR	SET LÜFTUNGSVENTIL	
56	6995232	1	GOMMINO	GROMMET	CAOUTCHOUC	GUMMI	
57	6995193	2	ASS. TAPPO	CAP ASS'Y	BOUCHON	SET DECKEL	
58	6995228	1	AIR PURGE	AIR PURGE	AIR PURGE	AIR PURGE	
59	6995188	1	ASS. TUBO PESCANTE	GROMMET ASS.Y	ENS.RONDELLE CAOUTCHOUC	SET GUMMIRINGE	
60	6995189	1	GOMMINO PASSATUBO	GROMMET	CAOUTCHOUC PASSE-CÂBLE	GUMMI	
61	6995174	1	ASS. PESCANTE MISCELA	FUEL PICKUP ASSY	PLONGEUR MÉLANGE	TREIBSTOFFZUFUHR	
62	6995190	1	TUBO	TUBE	TUBE	ROHR	
63	23878008/0	2	VITE	SCREW	VIS	SCHRAUBE	
64	6995249	1	CARTER SUPERIORE	UPPER COVER	COUVERCLE SUPERIEURE	DECKEL	
65	6995194	1	PROTEZIONE	GUARD	PROTECTION	SCHUTZ	
66	6995180	1	FERMACATENA	CHAIN GUARD	BUTÉE CHAÎNE	KETTENSTOP	
67	6995179	1	VITE	SCREW	VIS	SCHRAUBE	
71	6995204	1	GUARNIZIONE	GASKET	GARNITURE	DICHTUNG	
72	6995223	1	RONDELLA	WASHER	RONDELLE	UNTERLEGSSCHEIBE	
73	6995191	1	ASS. PESCANTE OLIO C/ TUBO	FILTER INTANK ASSY WITH PIPE	TUBE ASPIRATION HUILE	SATZ ÖLZUFUHR M.SCHLAUCH	
74	6995242	1	ASS. POMPA OLIO	OIL PUMP ASSY	POMPE À HUILE	SET ÖLPUMPE	
75	6995222	1	VITE SENZA FINE	FEMALE SCREW	VIS SANS FIN	ENDLOSSCHRAUBE	
76	6995205	1	TUBO	TUBE	TUBE	ROHR	
77	6995008	2	VITE	SCREW	VIS	SCHRAUBE	
78	6995206	1	COPERCHIO POMPA	COVER PUMP	COUVERCLE POMPE	DECKEL ÖLPUMPE	
79	23878008/0	2	VITE	SCREW	VIS	SCHRAUBE	
80	6995230	1	GABBIA A RULLI	NEEDLE BEARING	CAGE À ROULEMENTS	WALZENKÄFIG	
81	6995176	1	ASS.CAMPANA FRIZIONE 3/8"	DRUM ASS'Y, CLUTCH 3/8"	CLOCHE FRICTION 3/8"	SET KUPPLUNGSGLOCKE 3/8"	
-	6995178	1	ASS.CAMPANA FRIZIONE 1/4"	DRUM ASS'Y, CLUTCH 1/4"	CLOCHE FRICTION 1/4"	SET KUPPLUNGSGLOCKE 1/4"	
82	6995203	1	RASAMENTO CAMPANA	SPROCKET WASHER	RONDELLE CLOCHE	SCHEIBE GLOCKE	
83	6995177	1	ASS. FRIZIONE	CLUTCH ASS.Y	FRICTION	SET KUPPLUNG	
84	6995241	1	PIASTRINA	PLATE	PLAQUE	PLATTE	
85	6995220	1	VALVOLA	VALVE	VANNE	VENTIL	
86	6995192	1	GUARNIZIONE	GASKET	GARNITURE	DICHTUNG	
87	23275005/0	1	GOMMINO ANTIVIBRANTE	SHOCK ABSORBER	CAOUTCHOUC ANTIVIBRATIONS	SCHWINGUNGSDÄMPFER	
88	23878007/0	1	VITE	SCREW	VIS	SCHRAUBE	
89	23790006/0	1	TAPPO PER GOMMINO ANTIVIB	CAP	BOUCH. POUR CAOUT. ANTI-VIB.	STOPFEN	
90	6995219	1	STAFFA	CLAMP	ETRIER	BRIDE	
91	23878009/0	1	VITE	SCREW	VIS	SCHRAUBE	
92	6995231	1	FASCETTA	FAIR LED	FIXATION DE CABLE	KABELBEFESTIGUNG	
93	6995184	1	TUBO	TUBE	TUBE	ROHR	
94	6995235	1	RACCORDO TUBI	TUBE CONNECTION	CONNEXION TUBE	ANSCHLUSS	
95	6995181	1	VITE	SCREW	VIS	SCHRAUBE	